



LC-35

**USB2.0 Graphics Accelerated
Microscope Camera**

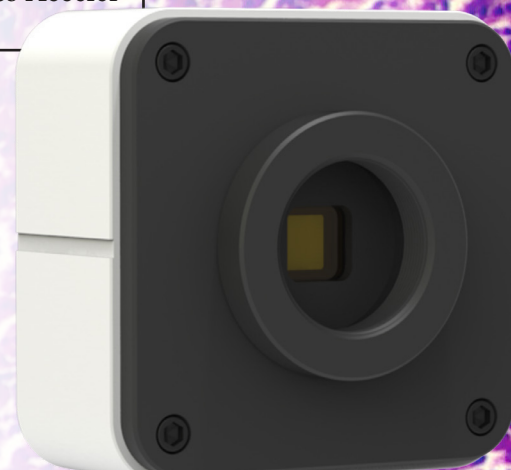


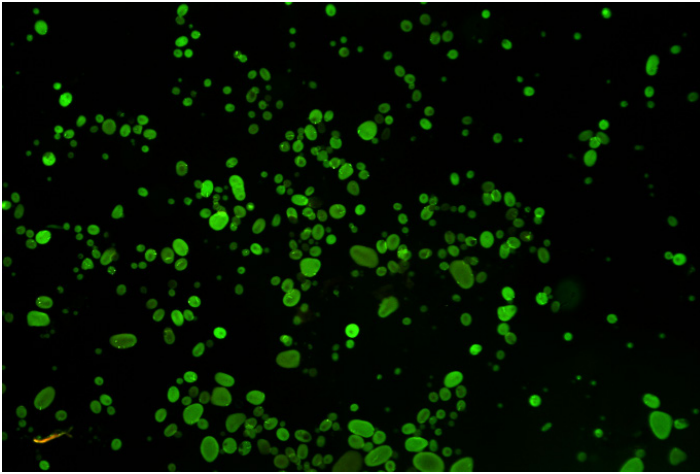
LC-35 - USB2.0 Graphics Accelerated Microscope Camera

With Innovative customized ISP technology, the LC-35 - USB2.0 Graphics Accelerated Microscope Camera's frame rate has been greatly improved. The frame rate of uncompressed original imaging is 5MP@22fps. This series digital cameras provide simple and economical microscopy imaging. They are widely used in academic and medical fields for precision and high resolution microscope image capturing and processing.

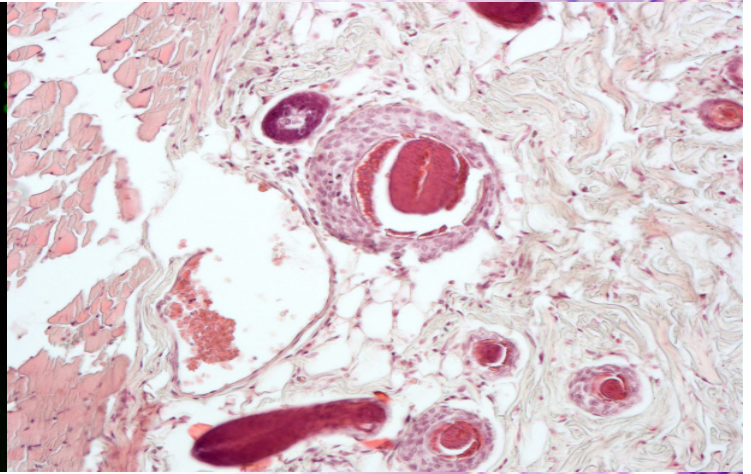
SPECIFICATION

| | |
|-----------------------|---|
| Model | LC-35 |
| Sensor Model | Sony, IMX335LQN-C |
| Sensor Size | 1/2.8" |
| Resolution | 5MP, 2560x1920 |
| Pixel Size | 2.0 μm x2.0 μm |
| Frame Rate | 22fps |
| Color/Mono | Color |
| Shutter Type | Rolling Shutter |
| Exposure Mode | Auto/Manual |
| Picture Format | TIFF/JPG/PNG/DICOM |
| Operating System | Windows 7/8/10 (32 Bit/64 Bit) |
| PC Software | Capture 2.0 |
| SDK | C/C++, C#, Directshow |
| Optical Interface | C-Mount |
| Data Interface | USB2.0 |
| Operating Temperature | 0-60 °C |
| Operating Humidity | 10%-85% |
| Camera Size | 68X68X42.5(mm) |
| Camera Weight | 253g |
| Note: | Capture 2.0 software does not support the dark field image processing module, real-time image stitching and real-time depth of field fusion function module when it is used with LC-35 - USB2.0 Graphics Accelerated Microscope Camera. |



SAMPLE IMAGES

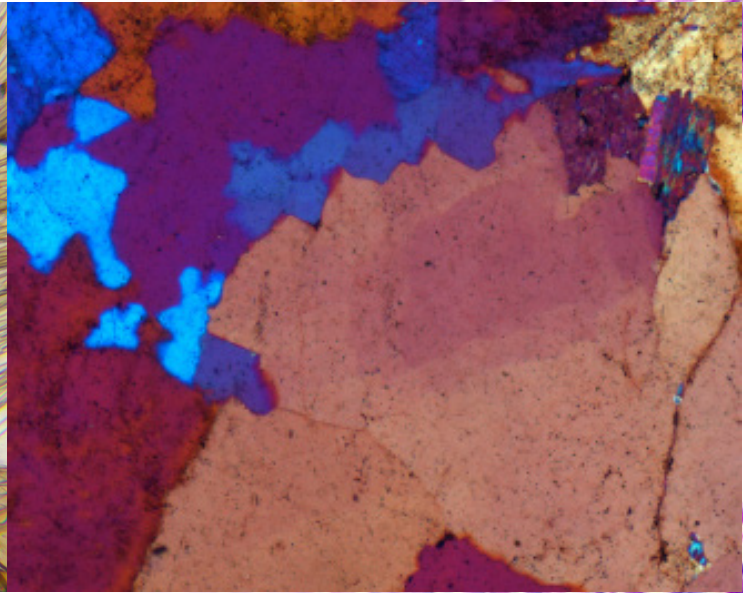
Diatom-Inverted Fluorescent Microscope-4x



Bright Field 20x



Mosquito 5.0MP



Polarizing Slide

