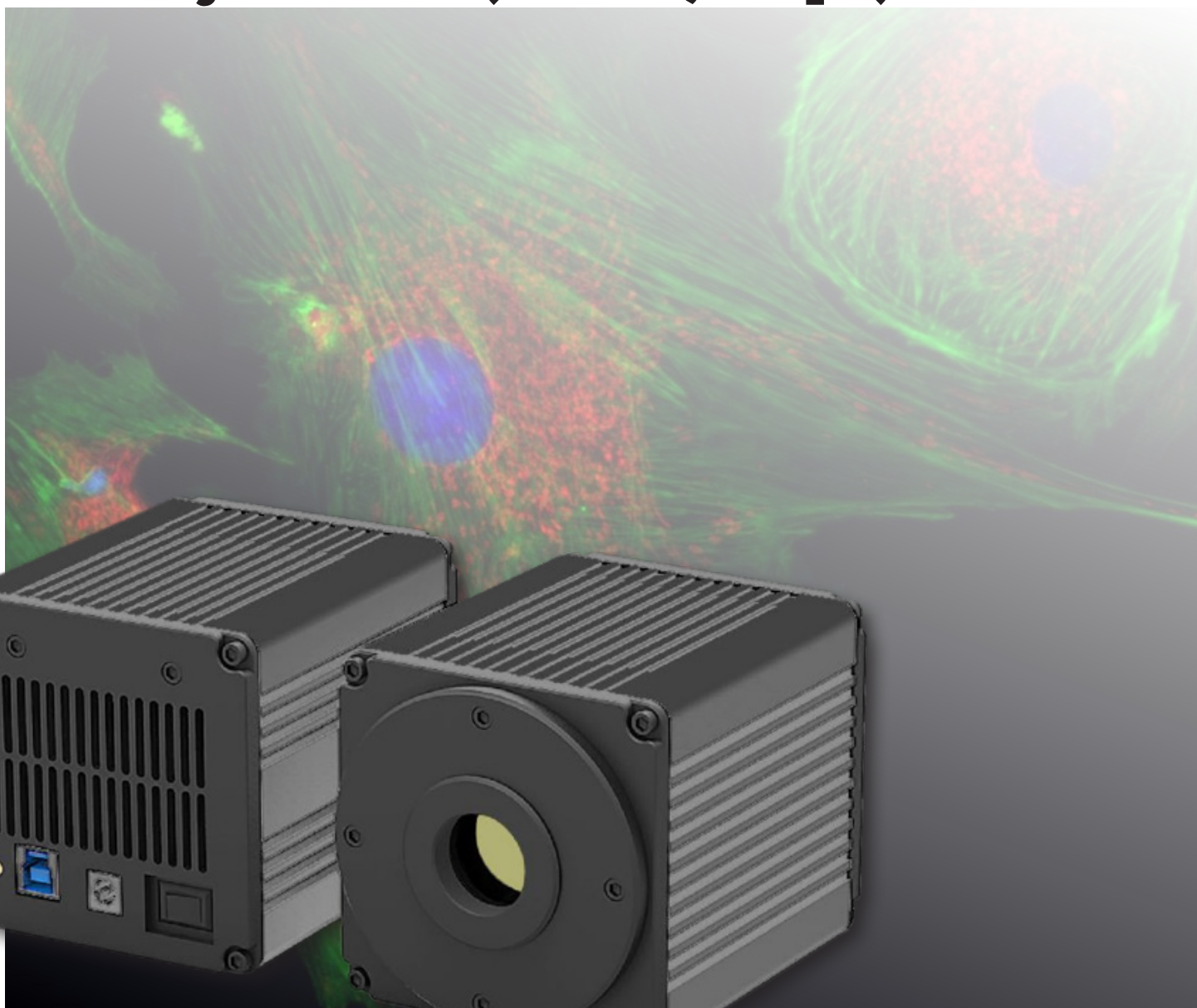




LC-26

Sony sCMOS (20 MP, 15fps) USB 3.0

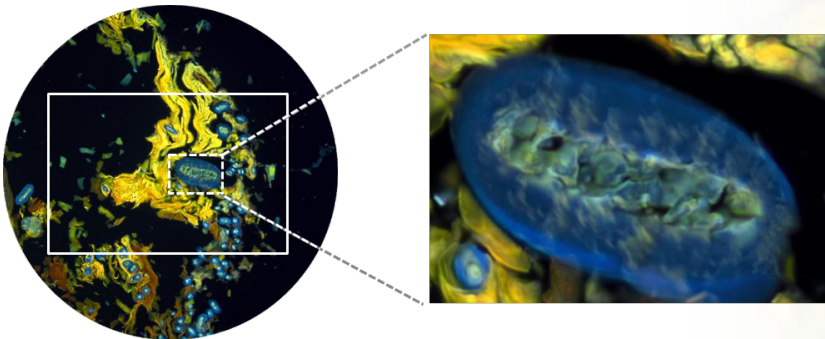


An Extraordinary Microscopy Camera 20MP Cooled Camera, the LC-26

20 megapixels, capturing high-definition detailed images in one shot. Thermoelectric cooling noise reduction technology. Advanced real-time image stitching and real-time EDF

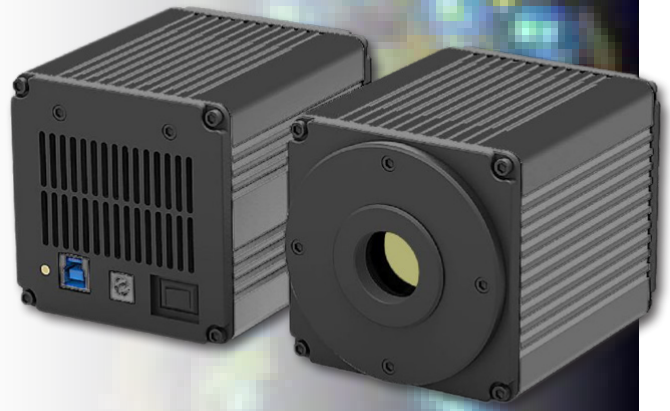
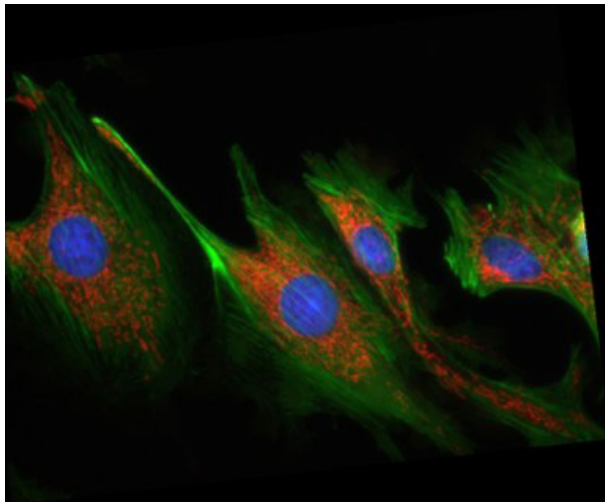
20 megapixels, capturing high-definition detailed images in one shot

The LC-26's 1-inch sensor image can cover the most uniform central area of the image plane, with a resolution of up to 20 megapixels, you can capture the high-definition details of your samples in one shot.



Thermoelectric cooling noise reduction technology to meet more professional color fluorescence imaging needs

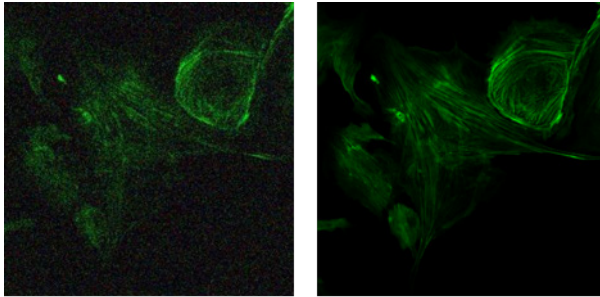
As with the top-level sCMOS camera technology, the LC-26 cooled camera operates at -15°C and can ensure long-term reliable operation, significantly reducing the hot pixels caused by the accumulation of dark current, and obtaining a purer fluorescent background image. More than twice the sensitivity of a CCD, to meet the needs of professional fluorescence imaging.



Real-time intelligent image processing, focused on improving image quality

Without sacrificing speed and image information, the LC-26 offers a variety of real-time intelligent image processing capabilities that allow you to view and capture flawless sample images in real time with the push of a button.

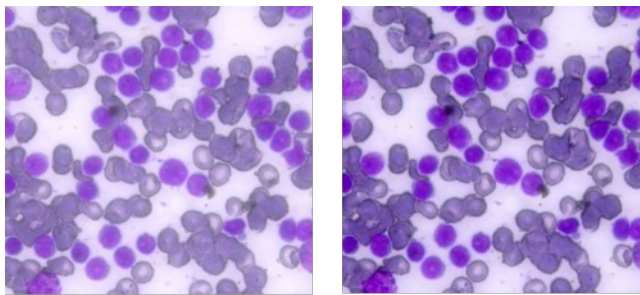
- Real-time 3D noise reduction, effectively eliminating random background noise



Before

After

- Real-time sharpening, enhanced detail, and more transparent



Before

After

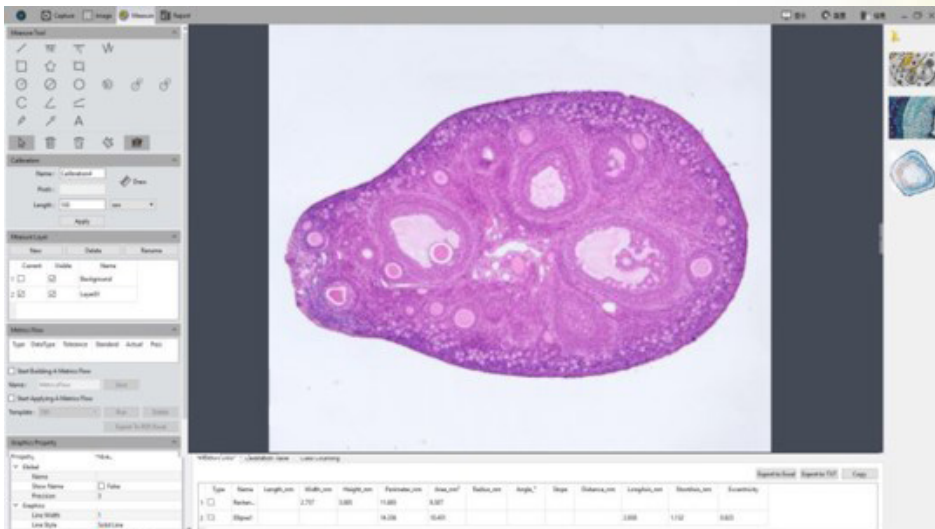
>50 frames per second high speed video

With a guaranteed field of view, the FL 20 offers a variety of high-speed imaging modes that can be adjusted for fast focus and positioning for an efficient image capture experience.

Resolution	FL -20	CCD
20MP	15fps	<1fps
5MP	53fps	4fps

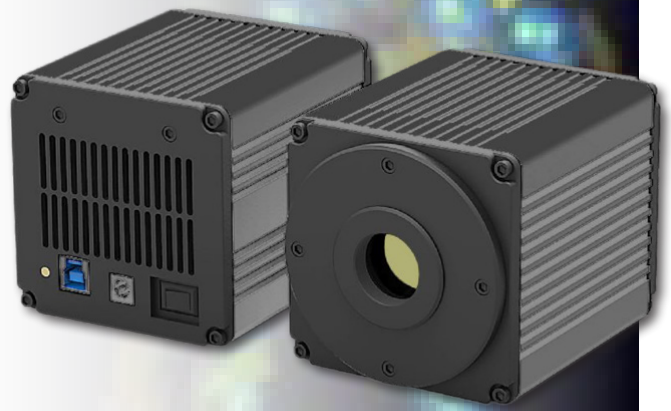
Revolutionary PC Computing Imaging Software Capture V2.0

Unique from the cumbersome process of traditional technology to obtain images after processing, the Capture V2.0 provides real-time image stitching and real-time depth of field fusion. This can automatically complete the image while the operator moves the stage - productivity at its best.



Camera Specifications

Product Model	LC-26
Color/Mono	Color
Sensor Model	Sony
Quantum Efficiency	84%@535nm
Resolution	5472(H) x 3648(V)
Pixel Size	2.40µm x 2.40µm
Sensor Size	15.86mm; 1inch
Shutter Mode	Rolling
Read Noise	<1e-
Cooling	Forced air(Ambient at +25°C):-15 °C
Frame Rate	14fps@5472x3648, 53fps@2736x1824 67fps@1824x1216
Binning	2x2, 4x4
Exposure Settings	Auto/Manual
Exposure Time	0.244ms - 2min
Picture Format	JPG/PNG/TIFF/DICOM
Data Interface	USB3.0
Bit Depth	16bit/8bit



Camera Size	85mm x 85mm x 100mm
Power Supply	12V
Camera Weight	1200g
PC Software	Captrue V2.0
Operating System	Windows(32bit/64bit)
Operating Environment	Operating: 0-40°C Humidity: 10%-85%

CaptureV2.0 Feature Function

· **Real-time depth of field fusion**

· **Real-time image stitching**

Modular function configuration

Intelligent 12-bit ISP color reproduction

Real-time fluorescence image synthesis and editing

HDR image synthesis

Micro-imaging-based intelligent automatic exposure

Intelligent flat field correction based on dynamic calculation

Supports single shot, delayed camera

Automatic video and delay video generation

Output format selection

User parameter groups save and load

Dynamic \ static measurement

Layered measurement

Customize measuring gauges, layers, precision

Customize image naming, style, save location

Implements drawing: points, lines, rectangles, polygons, circles, arcs, angles

Data export as TXT or Excel

Report generation and printing

