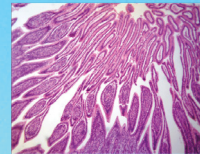




LABOMED, INC.



LB-530 Polarizing Binocular Microscope

The LB-530 Polarizing Binocular Microscope feature a highly robust construction and first class optics to provide a long life and excellent quality images. Accessories like Gypsum slide, Mica slide, Quartz wedge and Mechanical stage are available. The microscopes are specifically designed for geology, minerals and material areas. They also can be used in chemical fiber, semiconductor and pharmaceutical industries.

FEATURES

- Excellent Infinite Optical System.
- Widely used in geology, Mineralogy, Fossil fuel exploration.
- Single polarization, orthogonal polarization or conoscopic observation is available.

APPLICATION

The LB-530 Polarizing Binocular Microscope are ideal instrument in geology, petroleum, coal, mineral, chemicals, semiconductor and pharmaceutical inspection fields. They are widely used in academic demonstration and scientific research areas.

Labomed, Inc. • 2728 S La Cienega Blvd. Los Angeles, CA 90034 U.S.A. • 1(310) 202-0811 • spectro@labomed.com • www.labomed.com



LABOMED, INC.

SPECIFICATION

Item	LB-530
Optical System	Infinite Optical System
Viewing Head	Seidentopf Binocular Head, inclined at 30°, 360° Rotatable, Interpupillary Distance: 48-76mm.
Eyepiece	WF10×/20 mm
	WF10×/20 mm (Reticule 0.1mm)
LWD Infinite Strain Free Plan Achromatic Objective (Reflected)	
5×/0.13 (S)	W.D=24.23mm
10×/0.25 (S)	W.D=18.48mm
20×/0.40 (S)	W.D=8.35mm
50×/0.70 (S)	W.D=1.95mm
Nosepiece	Backward Quintuple nosepiece, center adjustable
Analyzer Unit	Rotatable 360°, module type, can be locked
Bertrand Lens	Built In, Center Adjustable
Optical Compensator	λ Slip(First Class Red), $1/4\lambda$ Slip, Quartz Wedge (I- IV Class)
Revolving Round Stage	Diameter Φ 156mm, Rotatable 360°, Center Adjustable, Division 1°, Vernier Division 6'
Focusing	Coaxial Coarse & Fine Adjustment, Range 25mm, Fine Stroke 0.2mm, Fine Division 0.002mm
Reflecting Polarizing Unit	With field diaphragm, aperture diaphragm, polarizer, 12V/50W halogen lamp (Input voltage:100V~240V)
Filter	Blue
Packing	Packing size 750mm×360mm×450mm, Gross Weight 15kgs, Net Weight 11kgs





LABOMED, INC.

SAMPLE IMAGES

