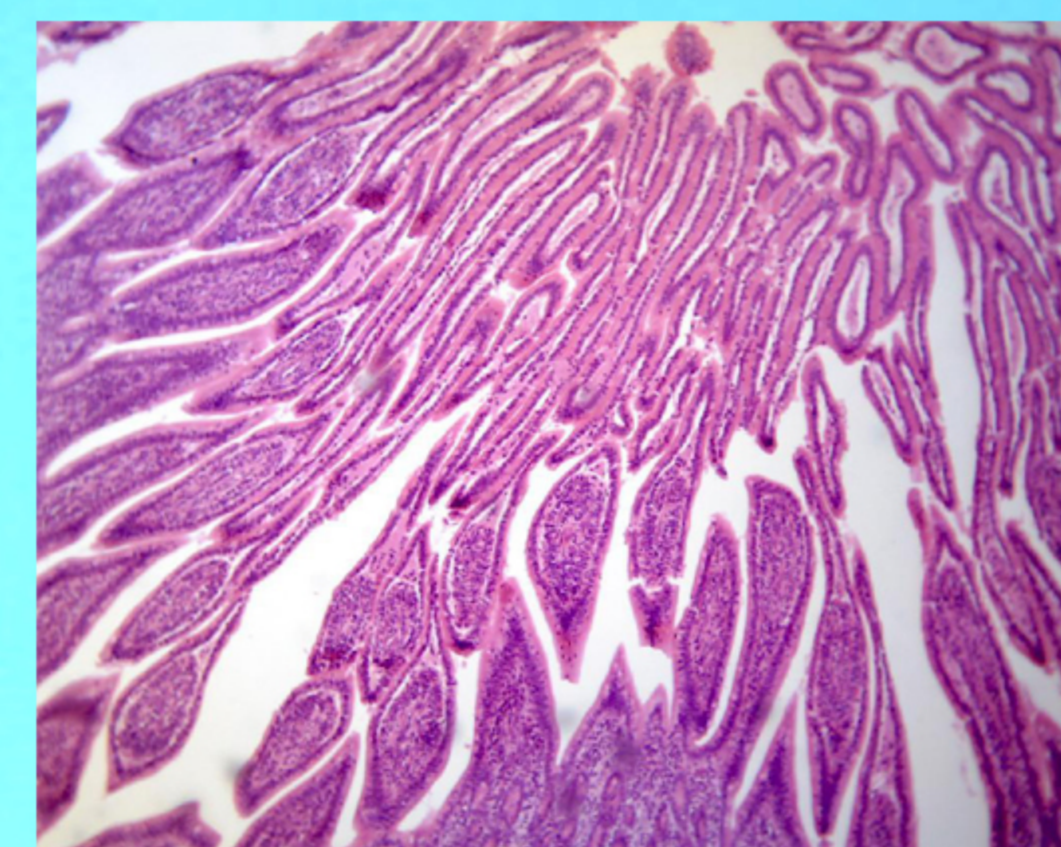




# LABOMED, INC.

www.labomed.com  
spectro@labomed.com



## LB-225 Binocular Biological Digital Microscope with Wide Field, LED Illumination and Six Semi-Plan Achromatic Objectives (4×, 10×, 20×, 40×, 60×, 100×)

Convenient and Comfortable Observing with High Point and Wide Field Eyepiece EW10×/ 20.  
Sharp and Bright Image with Semi-plan Objectives.  
Suitable for Different Region Power, supply with 100V-240V Multi-input Rating.



# LABOMED, INC.

www.labomed.com  
spectro@labomed.com

## LB-225 Binocular Biological Microscope with Wide Field, LED Illumination and Six Semi-Plan Achromatic Objectives (4×, 10×, 20×, 40×, 60×, 100×)

### Introduction

LB-225 Binocular Biological Microscope with Wide Field, LED Illumination and Six Plan Achromatic Objectives (4×, 10×, 20×, 40×, 60×, 100×) are classical biological microscopes, the microscopes feature ingenious stand, backward nosepiece and flexible structure. It is widely used in biological, pathological, bacterial, histological, immune and genetic fields. With a microscope adapter, a digital camera (or digital eyepiece) can be plug in to the trinocular tube or the eyepiece tube. Nice shape, excellent optical system and flexible outfit make you enjoy the microscope.

### Applications

It is an ideal instrument for the biology, bacteriology, immunology, pharmacology, and related fields. It is widely used in the academic, medical and clinical areas.

### Technical Specifications

Viewing Head:	Seidentopf Binocular Head, Inclined at 30°, 360° Rotatable, interpupillary distance 52-75mm
Eyepiece:	Wide Field Eyepiece EW10×/ 20
Objective:	Plan Achromatic Objective 4×, 10×, 20×, 40×, 60×, 100×
Nosepiece:	Backward Quadruple Nosepiece
Stage:	Double Layers Mechanical Stage 140×140mm/ 75×50mm
Focus:	Coaxial Coarse & Fine Adjustment, Fine Division 0.002mm, Coarse Stroke 37.7mm per Rotation, Fine Stroke 0.2mm per Rotation, Moving Range 20mm
Condenser:	NA 1.25 Abbe Condenser with Iris Diaphragm and Filter
Illumination:	LED Illumination, Brightness Adjustable
Filter:	Blue, Green Filter
Dimensions & G.W.:	35cm*31cm*57cm, 9.5kg

